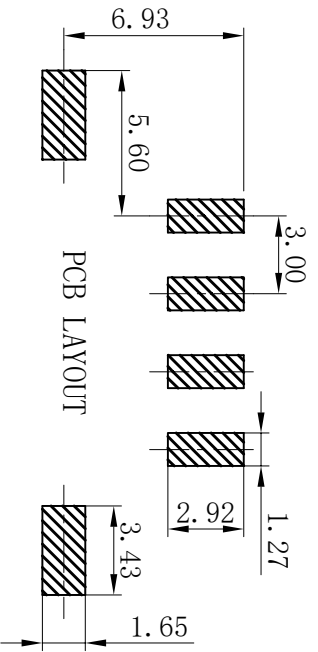
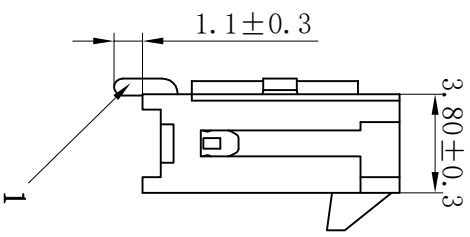
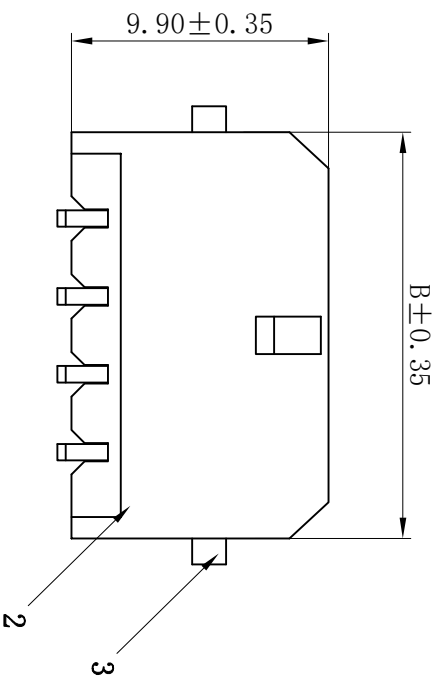
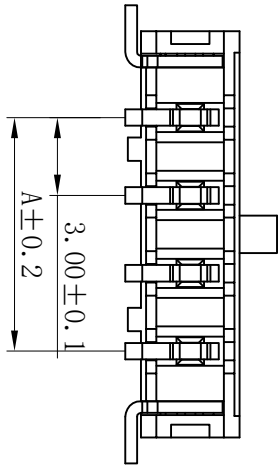


序号	名称	材料
1	插针	黄铜 (镀锡)
2	底座	LCP UL94V-0
3	焊片	黄铜 (镀锡)



版次	日期	内容

- Electrical properties
- Current rating: 3.5A AC\DC
  - Voltage rating: 250V AC\DC
  - Temperature range: -25°C to 85°C
  - Contact resistance: Initial value/20mΩ max
  - Insulation resistance: 1000MΩ min
  - Withstanding voltage: 1000V AC/ minute

孔位 poles	A	B
2	3.0	9.6
3	6.0	12.6
4	9.0	15.6
5	12.0	18.6
6	15.0	21.6
7	18.0	24.6
8	21.0	27.6
9	24.0	30.6
10	27.0	33.6
11	30.0	36.6
12	33.0	39.6

## 浙江乐马电气有限公司

尺寸公差	角度公差	品名:	43650-nAWB	设计:	张书晨
.X ±0.25	X.° ±3.0°	图号:	30002-AWB	审核:	王佳
.XX ±0.15	.X.° ±2.0°	比例:	--	批准:	陈其林
.XXX ±0.05	.XX.° ±1.0°	页数:	1/1	版本:	A

